

Sorento

CUSTOM HOMES

Dillon



🏠 Two-Storey

📐 2,719 SF + BSMT

🛏️ 5 Bedrooms

🚿 3.5 Bathrooms

➡️ 42' Wide

▪ Triple Attached Garage

▪ 18' Ceilings in Living Room with Large Stone Wall & Fireplace

▪ Large Kitchen with quartz countertops and backsplash

▪ Built in bench and wood ceiling feature in Dining Room

▪ Mudroom walk-in closet and walk-through Pantry

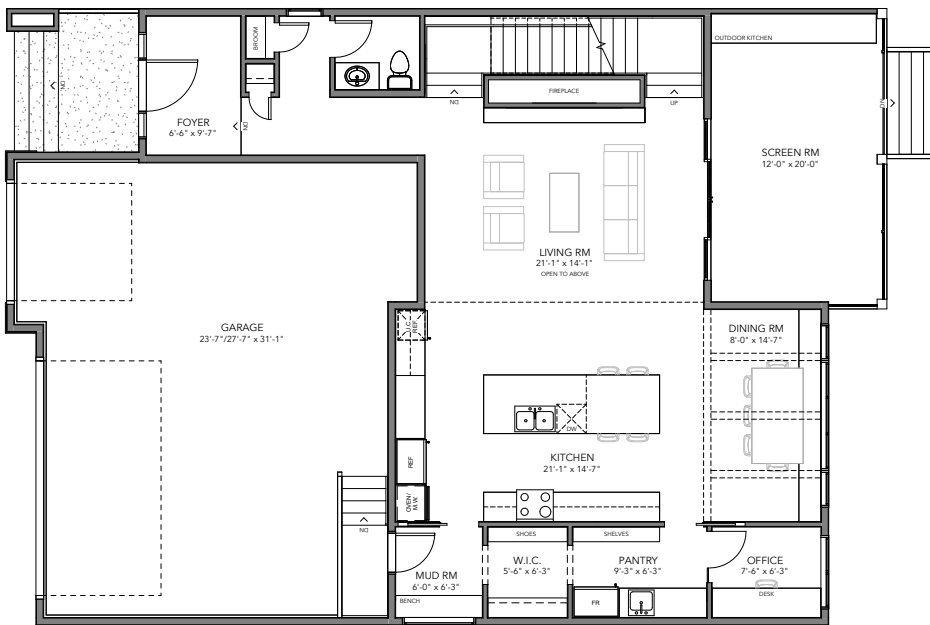
▪ Small Office on Main Floor

▪ Screen Room with stained T&G ceiling

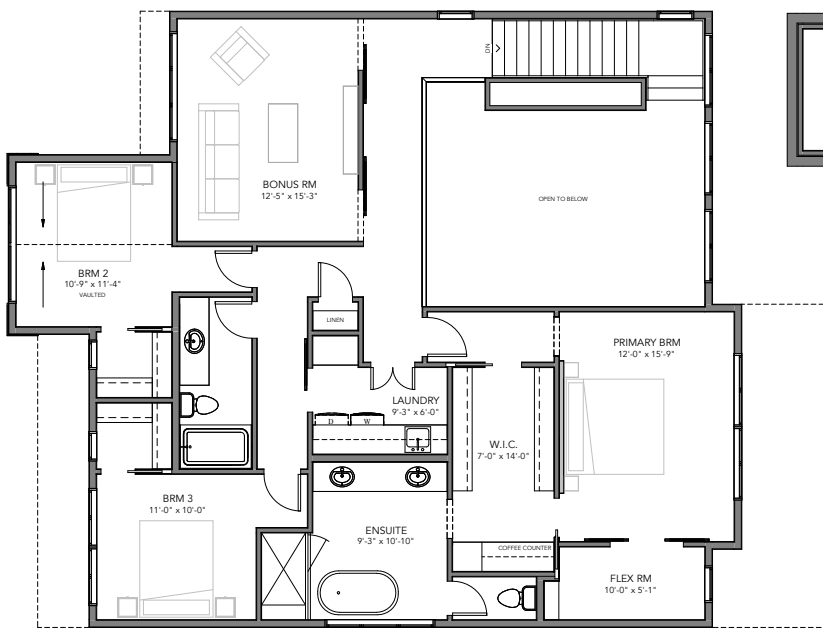
▪ Custom Barn Doors concealing the Bonus Room

▪ Large Primary Suite with adjoining Flex Room for fitness or work, walk-in closet with coffee/wine bar and 5-piece ensuite

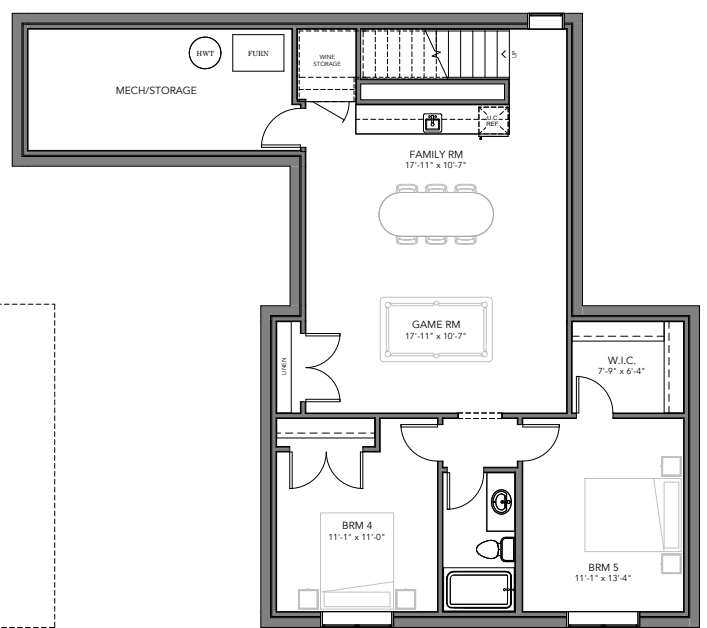
▪ Basement Entertainment space with wet bar and two large basement bedrooms



MAIN FLOOR 1,259 SF



UPPER FLOOR 1,460 SF



LOWER FLOOR 905 SF

