

# Sorento

CUSTOM HOMES

## Monroe



🏠 Two-Storey

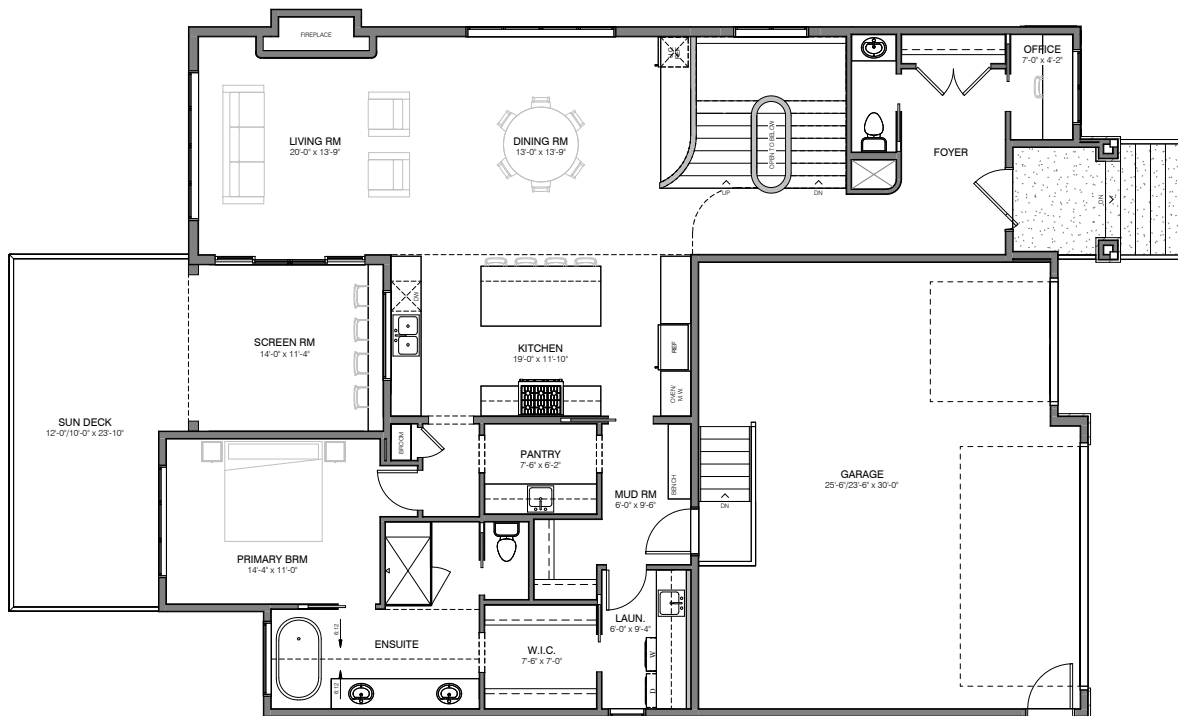
🏠 2,761 SF + BSMT

🛏️ 4 Bedrooms

🚿 3.5 Bathrooms

➡️ 46' Wide

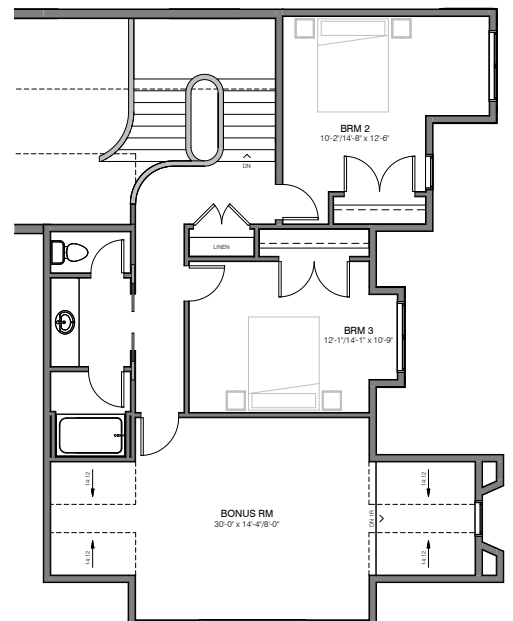
- Triple Attached Garage
- Vaulted Ceiling in Living & Dining Room
- Gas Fireplace with Plaster Finish
- Covered Deck with Retractable Screen, T&G Ceiling, and Pass through Kitchen Window
- Custom Kitchen with Quartz Features, Tiled Range Hood, and Floating Island
- Primary Bedroom, Laundry + Pocket Office conveniently located on the Main Floor
- Primary Ensuite featuring a Vaulted Ceiling and Switchable Privacy Window
- Hidden Bonus Room on Upper Floor with Two Bedrooms + Large Shared Bath
- Walkout Basement with Feature Wet Bar and connected Covered Patio
- Fitness Room with Custom Built-in Sauna
- Painted Ceilings + Curved Architectural details throughout



MAIN FLOOR 1,780 SF



LOWER FLOOR 1,369 SF



UPPER FLOOR 981 SF

